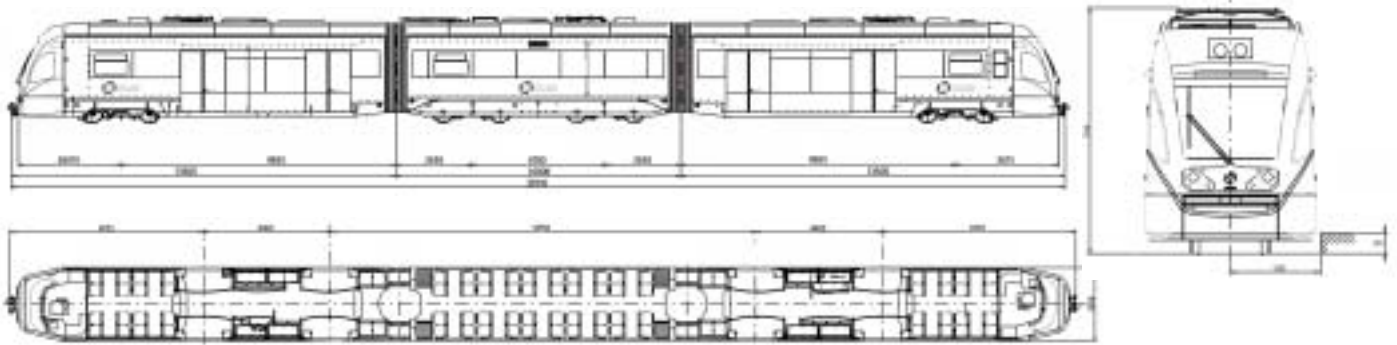




Train-Tram

Country: FGV (Spain)

Delivery: 2006



TECHNICAL CHARACTERISTICS

- Nominal current supply: 750 Vdc
- Energy recuperation
- Low voltage: 24 Vdc
- Six 3-phase asynchronous motors
- 6 x 140 kW traction power
- Air-cooled motor
- Three powered bogie/one trailer bogie
- Elical spring swing arm axle box primary-suspension
- Pneumatic secondary suspension
- 8 sanders
- Flange lubrication device
- Anti slip, anti skid system
- Electrical service brake: generitoric
- Electro-hidraulic urgency brake
- Electromagnetic brake shoes
- Two Auxiliary converters
- Climatitacion in cabins and passengers
- Retrovisión and surveillance

General data

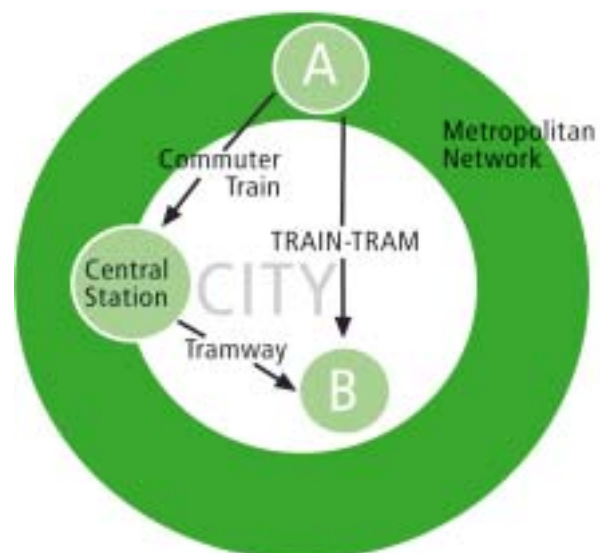
Contract date	2003
Type of vehicle	Train-Tram
Model	bi-directional
Owner	FGV
Quantity	9
Train consist	3 articulated cars

Performance and capacity

Maximum speed	100 km/h
Acceleration rate	1,2 m/s ²
Deceleration	
- service brake	1,2 m/s ²
- emergency braking rate	2,6 m/s ²
Maximum gradient	60°/00
Seated passengers/tip-up seats	92 / 6
Standing passengers (6 pass/m ²)	209
Pram and wheelchair locations	2
Multiple units	2

Dimensions and weight

Length of vehicle	37 m
Height	3,48 m
Width	2,55 m
Floor height Low floor entrance	360 mm
Percentage of low-floor area (extreme cars)	60%
Intermediate car height floor	900 mm
Height of floor	375/900 mm
Electric double-sliding doors	4
- door clearance height	2.000 mm
- door clearance width	1.240 mm
Wheel diameter (new/born)	720/660 mm
Gauge	1.000 mm
Minimum horizontal curve radius	30 m
Minimum vertical curveradius, crest	1200
Car weight (empty)	55,5 t
Car weight (loaded) (4 pass/m ²)	69 t
Maximum axle load (8 pass/m ²)	10 t
Buffer load	600 kN



Vossloh - Transportation Systems
 Polígono Industrial del Mediterráneo
 c/ Mitjera n° 6
 46550 - Albuixech (Valencia) / España
 Teléf. +00 34 96 141 5000
 Fax +00 34 96 141 5007
www.vossloh-transportation-systems.com