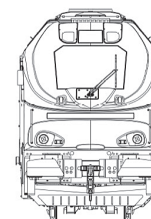
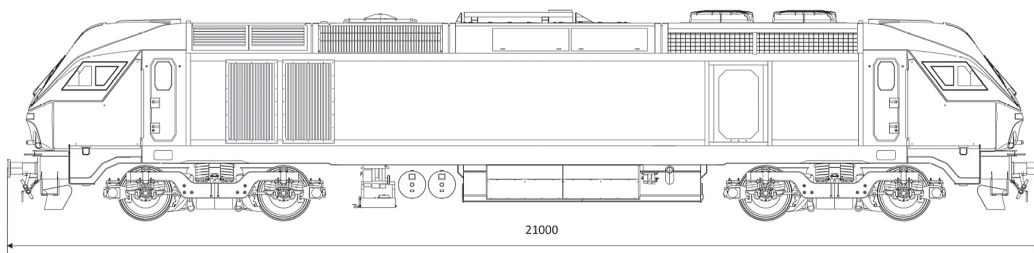




# EURO3000 AC

Diesel-Electric Locomotives

powered by  
**ELECTRIC MOTIVE.**



### GENERAL CHARACTERISTICS

Track Gauge	1.435 mm
Max. ambient T <sup>a</sup>	50 °C
Axle arrangement	Bo'Bo'
Weight	88 Tons (as per EN 15528)
Axle Load	22 Tn max.
Max Speed	up to 200 km/h
Max Tractive Effort	305 kN
Electrical Brake	Yes
Blended Brake	Yes
Fuel Tank Capacity	6,000 liters
Multiple Unit	27-pins / WTB
Emissions	IIIA
Clearance	UIC 505-1
Crash	EN15227

### DIMENSIONS

Distance between buffers	21 000 mm
Width	2850 mm
Height	4 264 mm

## 4 axle AC traction High Speed for Main Line Passenger Service

#### Diesel engine

Manufacturer	EMD
Model	12-710
Power rating	2454 bkW
Cylinders	12
Max rpm	904 rpm
Idle speed	200 rpm
Engine Overhauls	> 10 years

#### Brake equipment

Pneumatic	Knorr MBS
Blended Brake	YES
Compressor:	- Electric driven - Screw type
Others	EP Brake - NBÜ

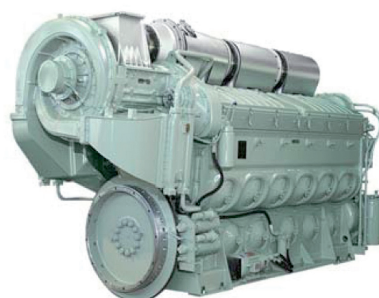
#### Electrical transmission

Type	AC/AC IGBT
Traction Motors	1TB2624FM (AC)
Main Generator	TA12
Companion Alternator	CA9
Dynamic Brake	150KN
Auxiliary System	AC - Inverter Driven
HEP Systems	Optional

#### Bogie

Frame	Fabricated Steel
Axle	EN13260 EN13261 EN13262
Wheel	44" (1117 mm)
Suspension:	- Primary Coil Springs - Secondary Coil Springs
Drive arrangement	Frame Mounted
Brake	Disc brakes

powered by  
**ELECTRO-MOTIVE**



Vossloh España, S.A.  
Polígono Industrial del Mediterráneo  
c/ Mitjera nº 6  
46550 - Albuixech (Valencia) / España  
Tel. +00 34 96 141 5000  
Fax +00 34 96 141 5007  
[www.vossloh-rail-vehicles.com](http://www.vossloh-rail-vehicles.com)